

URIT *Since 1984*
Global Diagnostics Supplier



BH-70P

3-Part-Diff Hematology Analyzer

Never Compromise Thirst for Speed, Faster to be First

72 samples/hour of double chambers

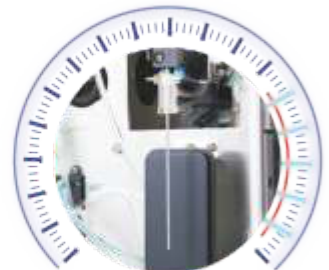
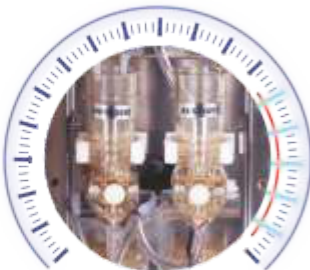
Compact and minimized size

2 reagents system (Diluent & Lyse)

RFID reagent close system optional



- 22 parameters with P-LCC, P-LCR and RBC, WBC, PLT histograms
- Throughput up to 72 samples per hour with double chamber design
- Impedance method for WBC, RBC and PLT
- Photoelectric colorimetry method for HGB with cyanide free reagent
- Micro sample volume at 13uL for whole blood mode and 20uL for pre-dilute mode
- On board storage capacity of 100,000 samples results
- RFID reagent close system optional
- Four kinds of QC modes : L-J, X, X-R and X-B
- Support USB data backup & system upgrade
- Build-in thermal printer
- LIS and HIS available with HL7 protocol





Accurate and Precise Results

- Proven impedance measurement technology
- Auto internal & external cleaning for aspiration probe
- High precision syringes
- Internal preheating for diluent for every test
- 68 um and 100 um ruby apertures



Easy to Use

- Large color LCD with high resolution
- Working status indicator light
- Mouse and keyboard connection by USB
- Internal storage of lyse



Cost-effective

- Tidy fluid system with low reagent consumption
- Only 2 reagents for sample testing
- Flexible reagent packaging from original manufacturer
- 30+ reagent joint venture manufacturers worldwide



Low and Easy Maintenance

- Special self-checking function during initialization
- Auto clog removing by aperture cauterizing and flushing
- Error messages
- Openable front panel and side door





Nearly Perfect Software Function

- Friendly interface and illustrate icons
- On board storage up to 100,000
- L-J, X, X-R and X-B QC methods
- Support LIS and HIS
- Tailor-made multi-language operation system



Reliable Spare Parts Quality

- Well-known global spare parts suppliers
- High performance PCB board from fully automatic assembly line
- Individual quality control management for each component



International Standard Certificate and Registration Documents

- ISO9001 & ISO13485
- CE, FSC, clinical test report, risk anal
- Othersysis report



Professional Technical Support

- 24 x 7 around -the-clock response
- Entire life cycle service solution
- Door-to-door service for complicated problems
- Provide qualification certificate to skilled engineer



Parameters

WBC, LYM#, MID#, GRAN#, LYM%, MID%,
GRAN%, RBC, HGB, HCT, MCW, MCH, MCHC, RDW-CV,
RDW- SD, PLT, MPV, PDV- SD, PDW- CV, PCT, P- LCR, P- LCC
3-part differentiation of WBC, 22 parameters and 3 histograms

Principles of operation

WBC/RBC/PLT: electrical impedance
HGB: photoelectric colorimetry

Aspiration volume

Whole blood μL , pre diluted 20 μL

Aperture diameter

WBC 100 μm , RBC/PLT 68 μm

Throughput

72 samples per hour

Data storage

Up to 100,000 samples results with histograms

Alarms

Error messages

Dilution ratio

	Whole blood	Capillary blood
WBC/HGB	1:232	1:400
RBC/PLT	1:40000	1:45000

Display

10.4 inch color LCD, resolution 800 x 600 screen

Control & calibration

L-J, X-R, X-B four control modes, manual and auto-calibration

Input/output

Support Rs232, 6USB (mouse, keyboard, HP printer, barcode reader and flash disk),
Internal 57mm thermal printer

Power

AC 100-240V, 50/60Hz, 180VA

Dimension & Weight

415mm (L) x 305 (W) x 395 (H), about 18kg



Marketed by :

V R HealthTech

Plot No. 2, First Floor, N.K. Sharma Office Road
Lohgarh, Zirakpur-140603,
Distt. Mohali. Punjab
E-mail : vrhealthtech@gmail.com
Mobile : +91-94172 92991